

# Stages of ALZHEIMER'S

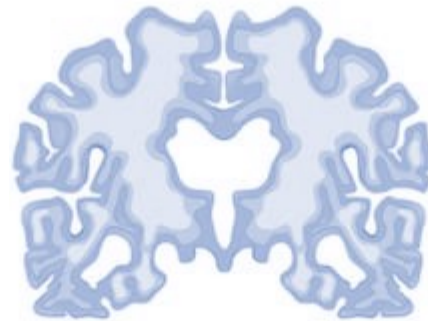
Leeza's Care  
Connection



## Mild Cognitive Impairment

Duration: 2-4 yrs / Av Age: 65

- Memory Loss
- Language & word-finding difficulties
- Miss-names objects
- Trouble Expressing thoughts
- Decreased involvement in conversation
- Mood and Personality Changes
- Diminished Judgment
- Inappropriate Behavior
- Decrease ability to perform complex tasks
- Social Skills Maintained
- "Old" Learned Behaviors Maintained
- Driving skills remain intact
- Activities of Daily Living Maintained



## Moderate Alzheimer's

Duration: 2-4 yrs  
(65-95% of diagnosis occurs here)

- Behavioral, Personality Changes
- Delusions (Firm False Beliefs) & Paranoia
- Aggression
- Disinhibition
- Inappropriate sexual behavior
- Unable to Learn or Recall New Info
- Repeating Questions
- Long-term Memory Affected
- Forgetting family and friends' names
- Activities of Daily Living Difficulties
- Trouble Managing Finances
- Social Skills Decline
- Driving Skills Decline
- Trouble eating, bathing, toileting, dressing



## Severe Alzheimer's

Duration: 2-4 yrs

- Incontinence
- Requires Assistance with All ADLs:
  - Grooming
  - Toileting
  - Dressing
  - Eating
- Unable to Converse / One Word Answers
- Able to Follow One Step Commands Only
- Sleep Disturbances
- Wandering, Pacing
- Slow Motor Movements
- Difficulty Walking, Chewing, Swallowing
- Looses Ability to Smile (Flat Affect)
- Eventually unable to walk, talk, chew, swallow, or remain awake
- Total dependence

DID YOU  
KNOW?



Empty Page Header Area

# California



[Download Calendar](#)



[Download Newsletter](#)

## September 2020

### "I Can't Hear You!" Addressing Hearing Loss

 Sep 2, 2020, 1:00 PM – 2:00 PM

### Facebook LIVE: Brain Games With Marti!

 Sep 3, 2020, 1:00 PM – 1:15 PM

Take 15 min for challenge your brain

### Making Homes Safe For Someone With Alzheimer's

 Sep 9, 2020, 1:00 PM – 2:00 PM